



QUICK START GUIDE

Models:

4K-SC
UHD-SC

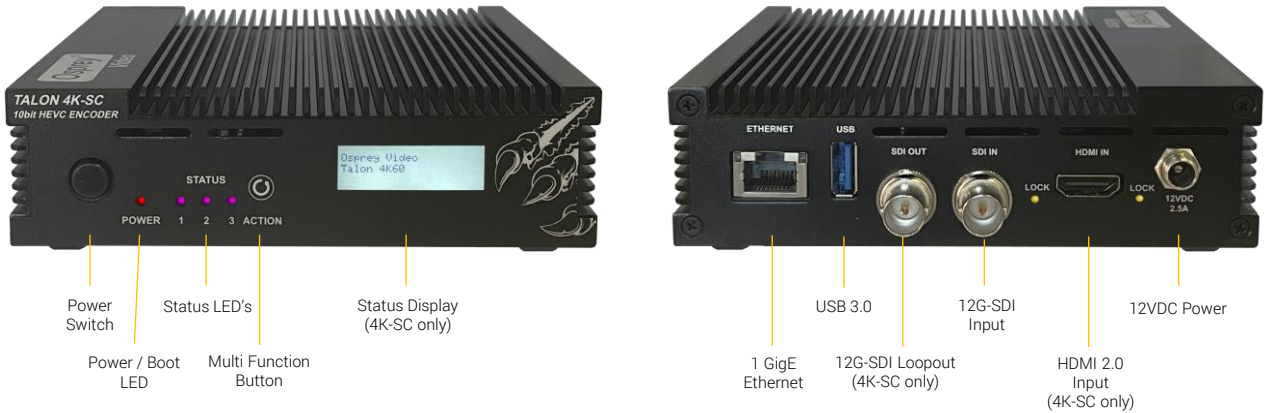
HARDWARE ENCODER
4K60 10-bit
H265 HEVC | H264 AVC



© 2023 Osprey Video. All rights reserved. Osprey® is the registered trademark of Osprey Video. Any other product names, trademarks, trade names, service marks, or service names owned or registered by any other company and mentioned herein are the property of their respective companies. No part of this specification may be reproduced, transcribed, transmitted or stored in a retrieval system in any part or by any means without the express written consent of Osprey Video. Osprey Video reserves the right to change any products herein at any time and without notice. Osprey Video makes no representations or warranties regarding the content of this document and assumes no responsibility for any errors contained herein.



Hardware Description



Power Switch	Physical ON/OFF Switch
Power / Boot LED	Red at Power On, turning blue once booting process is complete
Status LED's	Status LED's that can be configured in Talon UI – System – IO Configuration
Multi Function Button	Start, Stop, Factory Reset (Hold until message "Release Button" appears on the display)
Status Display	Displayed information can be configured in Talon UI – System – IO Configuration
1 GigE Ethernet	One Gigabit Ethernet RJ45 connection
USB 3.0	Save to File for an MP4 copy of the live stream
12G-SDI Loopout	Loopout of the SDI Input
12G-SDI Input	SDI Input up to DCI60 on 4K-SC and up to UHD60 on UHD-SC
HDMI 2.0 Input	Non-HDCP compliant HDMI 2.0 input
12VDC Power	Locking 12V Power Input



Connecting your Talon Encoder

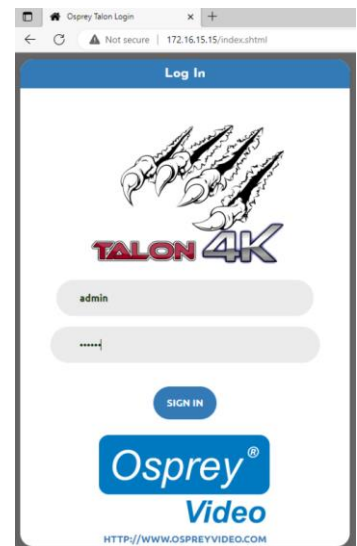
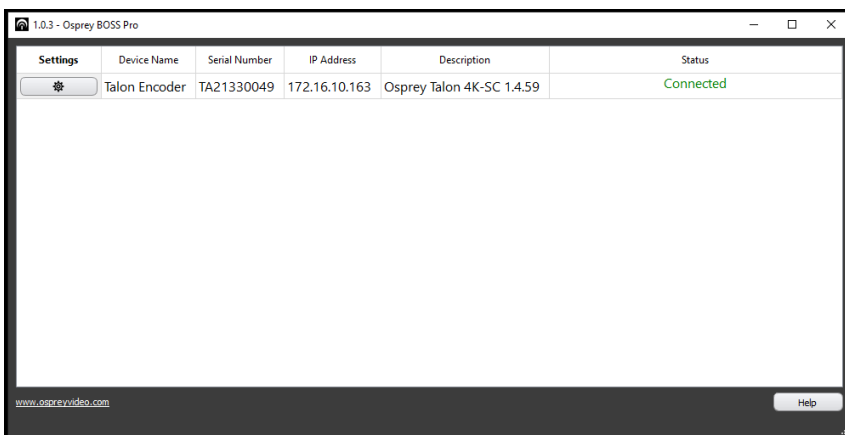
Important! Talon Encoders ship from the factory in DHCP mode. Please ensure your host PC and Talon are connected to the same network supporting DHCP.

1. Connect Talon to your network using a CAT5 or faster Ethernet cable
2. Connect Talon to power using the supplied 12V adapter. Ensure the barrel connector is fully engaged and locked
3. Power up Talon with the front power switch
 - Red "Power" LED will turn blue once the booting process is complete
 - The assigned IP address will display (4K-SC only). This might take up to a minute
4. Connect to Talon from your host PC
 - Option #1: Type the IP address into your web browser
 - Option #2: Download "Boss Pro" from www.ospreyvideo.com to find all Talon on your network
5. Default login credentials
 - Username: admin
 - Password: osprey

Setting up Talon without Network access or with Network without DHCP server using APIPA

1. Verify your PC is set to Automatic IP
2. Connect Talon direct to your PC with an Ethernet cable (ensure the PC doesn't have network connection though Wifi, USB, etc)
3. Follow above instructions beginning with step 2.

APIPA - Automatic Private IP Addressing (APIPA) is a feature of Windows-based OS -- included since Windows 98 and Windows ME -- that enables a Dynamic Host Configuration Protocol client to automatically assign an IP address to itself when there's no DHCP server available to perform that function.



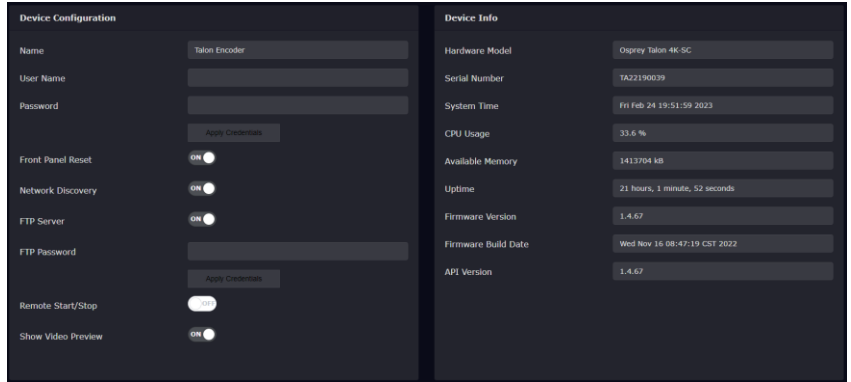


Configuring your Talon Encoder

System

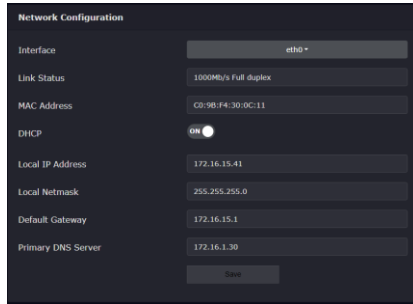
Device

- Device name
- Username and password settings
- FTP Settings
- Remote Start Enable
- Video Preview Enable
- Device Info



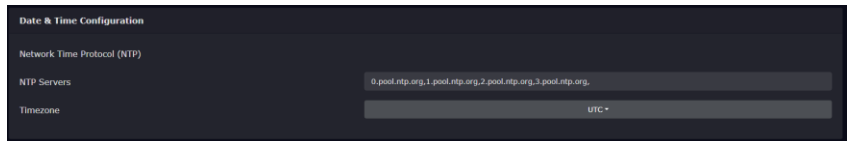
Network

- Network Settings



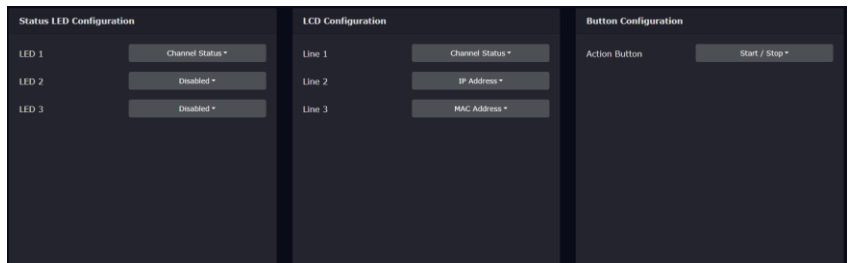
Date & Time

- NTP Server
- Timezone



IO Configuration

- Assignment for front panel LED's
- Customization for display and button





Configuring your Talon Encoder

Channels

Channel 1

- Output delivery protocol settings (needs to be set first as this will change the available video and audio options)
- Video and Audio encoding settings
- Archiving options

Output	Video	Audio Pair 1
Auto Start: Disabled ▾	Source: SDI ▾	Enable Audio: Enabled ▾
Protocol: TS over SRT ▾	Output Resolution: 3840x2160 ▾	Codec: AAC-LC ▾
Aux File: MP4 File ▾	Framerate: 30 fps ▾	Rate Control: Average (ABR) ▾
Device Type: Network Share ▾	Codec: H265/HEVC ▾	Bitrate: 128 kbps ▾
Network Share Location: <input type="text"/>	Target Bitrate: 5000	Sample Rate: 48 kHz ▾
Domain: <input type="text"/>	Encoding Profile: Main 4:2:2 10 ▾	PID: 500
Username: <input type="text"/>	Color Processing: 4:2:2 10-bit ▾	
Password: <input type="text"/>	Rate Control: Constant (CBR) ▾	Audio Pair 2
Path and Filename: untitled	Filler Data: Enabled ▾	Enable Audio: Disabled ▾
Max File Size (MB): 100	QP Mode: Auto ▾	Audio Pair 3
SRT Mode: Listener ▾	Max QP: 36	Enable Audio: Disabled ▾
SRT Port: 2088	Min QP: 24	Audio Pair 4
SRT Stream ID: <input type="text"/>	GOP Mode: Low Delay P ▾	Enable Audio: Disabled ▾
Latency: 125	GOP Size: 60 Frames ▾	
Encryption: Disabled ▾	Metadata: Off ▾	
Video PID: 600		

Status

- Input and Stream Status Information

Stream Status					Input Status	
Channel	Status	Input	Type	Duration	HDMI	No Link
1	Stopped	sdi1	srt	N/A	SDI	1080p30

Video Status					Audio Status				
Channel	Codec	Video Bitrate	Current Video Bitrate	Metadata Bitrate	Channel	Codec	Audio Bitrate	Current Audio Bitrate	
1	HEVC	2000	N/A	N/A	1	Pair 1-2	AAC-LC	128 kbps	0 kbps



Configuring your Talon Encoder

Start

- Start encoding (the front panel button can also be configured to start the encoder)

Stop

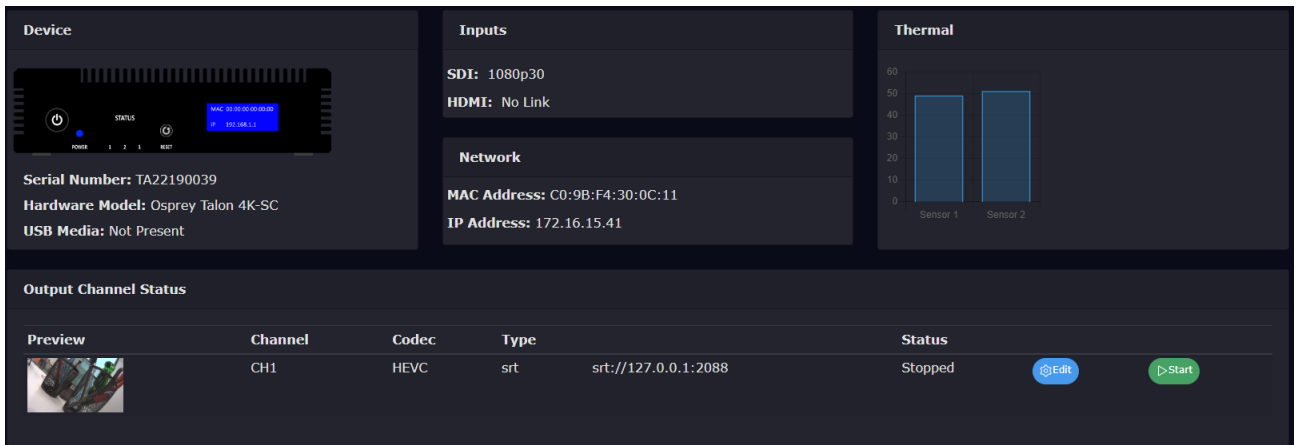
- Stop encoding (the front panel button can also be configured to stop the encoder)

Support

- Firmware updates
- Restore Options
- Contact Information
- Licensing information


Dashboard

- Hardware, Input and Network Overview
- Stream Status
- Input Video Preview



The dashboard is divided into several sections:

- Device:** Shows a photo of the encoder with a status display. Below it, text reads: Serial Number: TA22190039, Hardware Model: Osprey Talon 4K-SC, USB Media: Not Present.
- Inputs:** Shows SDI: 1080p30 and HDMI: No Link.
- Network:** Shows MAC Address: C0:9B:F4:30:0C:11 and IP Address: 172.16.15.41.
- Thermal:** A bar chart showing temperatures for Sensor 1 and Sensor 2, both at approximately 50 degrees.
- Output Channel Status:** A table with columns for Preview, Channel, Codec, Type, and Status.

Preview	Channel	Codec	Type	Status
	CH1	HEVC	srt srt://127.0.0.1:2088	Stopped Edit Start